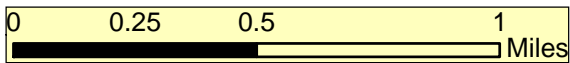
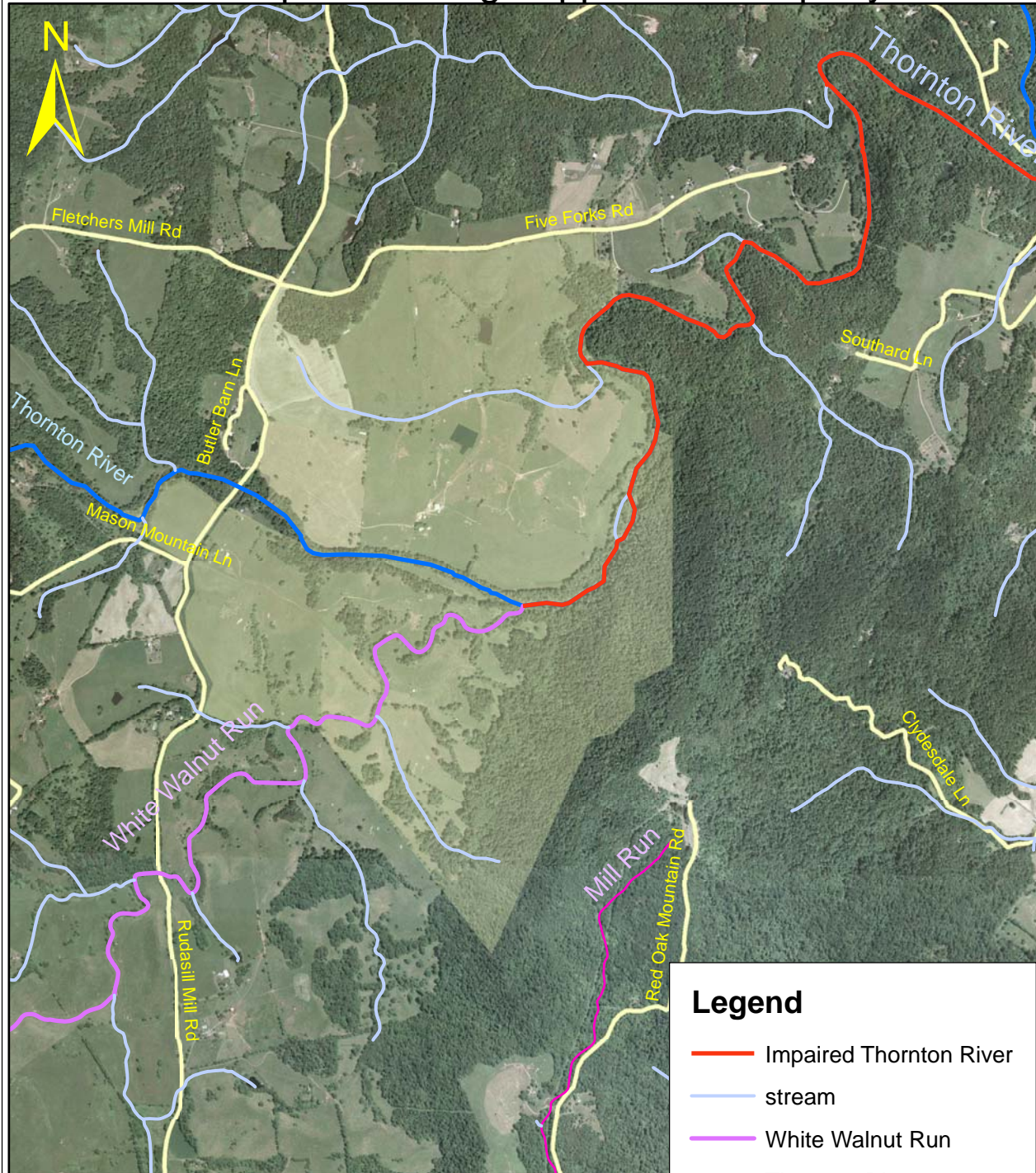


Impaired Thornton River Segment in Proposed Sludge Application Property



Impaired segment of Thornton River begins in proposed sludge application property (shown in pale green) and goes 3.38 miles to confluence with Rush River.

Source: VA DEQ 2006

Map prepared by Piedmont Research Institute October 2, 2006

Legend

- Impaired Thornton River
- stream
- White Walnut Run
- Thornton River
- Rush River
- Mill Run
- Property (approx.)
- roads